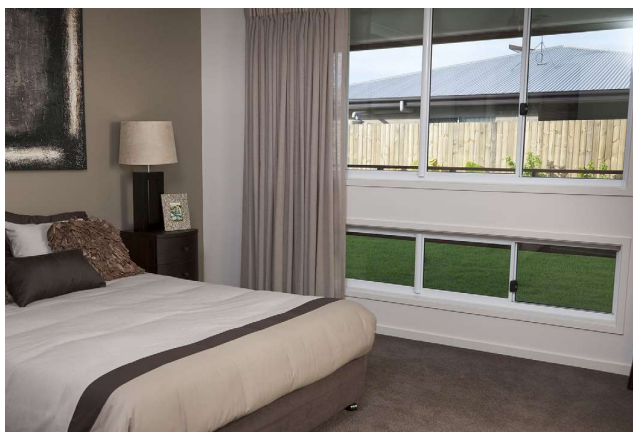




## Perth Window & Door Replacement Company



Windows to the world, Ask about how you can save on your energy bills.



Clever combinations can add style to any room



Windows that allow easy furniture location without compromising natural light

# Sliding Windows

Sliding windows, manufactured by Hi Lite Aluminium Products, have a slimline aluminium frame and expansive window panels to add an elegant look and feel to your home. The improved energy efficient design will help you to create an environmentally smarter home. These sliding windows feature multiple rollers, in a high-quality, modular roller system. This system ensures the window glides smoothly and easily and will continue to do so well into the future.

Glass can be selected from a number of high-performance options, which cater for Australia's extreme climate and energy rating requirements.



## Features



Full 10 Years  
Warranty on our  
Windows and Doors

- Durable, low-maintenance, easy-clean aluminium profiles
- A comprehensive 10 year warranty for your peace of mind
- Easily coupled to the Hi Lite Aluminium range of windows and doors
- Slimline profiles for wide, uninterrupted views
- Anti-lift sash for added security
- Moulded santoprene gaskets and high performance brush seals; prevent air and water leakage
- Keyed mullion latch fitted as standard
- Full compliance with Australian Building Standards 2047

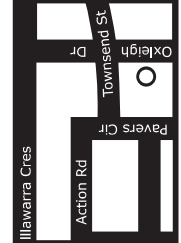
## Options

- Fly screens and Amplimesh security (fitted pre or post installation)
- A wide range of fashionable powder-coated finishes
- Standard, bay and corner configurations
- Numerous configurations: 2, 3, and 4 single-height panels
- Available in various frame widths
- Non-keyed mullion latch
- 'Ventlock' allows airflow, while keeping your window securely locked
- Colonial bars for a traditional or decorative look

# Sliding Windows

Standard Specifications  
Non standard available on request

Bricks	2.5	3.5	5	6	7.5	8.5	8.5	10	10	11	12.5
Door	610	850	1210	1450	1810	2050	2050	2410	2410	2650	3010
7											
10											
12											
14											
16											
17											
21											
25											



**Visit our showroom**  
25 Oxleigh Drive Malaga WA  
**Mon to Fri: 8am - 5pm**  
**Sat: 9am - Noon**

When you employ the **Perth Window & Door Replacement Company**, you've chosen a company committed to delivering the best customer service, the best window and door solutions, and the best value for your money.



**Ph 9249 2234**

**perthwindowreplacement.com.au**